

Mail servis

Uputstvo za korišćenje

Informacije	
Datum ponude:	03.11.2014.
Kontakt osoba:	Sibin Grašić
e-mail	Sibin.grasic@mensa.rs

1. Uvod

Webmail servis se nalazi na adresi <https://mail.mensa.rs> i koristi validan SSL sertifikat.

Za pristup servisu koristite isto korisničko ime kao ranije, i lozinku koja se nalazi u telu e-maila koji vam je poslat sa naloga sifre@mensa.rs

2. Prvo logovanje

Prvo logovanje na sistem **mora** biti putem web interfejsa, i od Vas se zahteva da promenite šifru kako biste mogli da nastavite sa korišćenjem.



Ukoliko želite da koristite neki desktop klijent umesto web interfejsa parametri su sledeći

Za primanje: Mail server: mail.mensa.rs Mail protocol: IMAP (POP servis je onemogućen) Port: 993 Use SSL / Use secure connection: Yes Username: Vaša puna e-mail adresa Password: Vaša lozinka	Za slanje: Mail server: mail.mensa.rs Port: 465 SMTP Auth / Require Authentication: Yes Use SSL / Use secure connection: Yes Username: Vaša puna e-mail adresa Password: Vaša lozinka
---	--

Nakon prvog logovanja **OBAVEZNO** morate podesiti web interfejs za slanje / primanje HTML poruka:
To možete uraditi u jezičku **PREFERENCES** u **mail** sekciji.

The image shows a screenshot of an email client's preferences page. On the left, a sidebar lists 'Preferences' with sub-items: 'General', 'Accounts', 'Mail' (highlighted), 'Filters', and 'Signatures'. The main content area is divided into two sections:

- Displaying Messages:** This section includes a 'Check New Mail' dropdown set to '5 minutes'. Below it, the 'Display Mail' options are shown with 'As HTML (when possible)' selected (indicated by a radio button) and 'As Text' unselected. A yellow callout box labeled 'Stikirati HTML' has a red arrow pointing to the 'As HTML' radio button.
- Composing Messages:** This section includes 'Compose' options with 'As HTML' selected and 'As Text' unselected. It also features font settings: 'Font: Sans Serif', 'Size: 12pt', and 'Color'. Below these are 'Settings' with several checkboxes: 'Automatically save drafts of messages while you are composing' (checked), 'Always request read receipt' (unchecked), 'Reply/Forward using format of the original message' (checked), 'Always compose in new window' (unchecked), 'Mandatory spellcheck before sending a message.' (unchecked), and 'Save a copy to Sent folder' (checked). A yellow callout box labeled 'Obavezno odabrati As HTML' has a red arrow pointing to the 'As HTML' radio button.

3. Filteri

Web interfejs omogućava i kreiranje filtera po više kriterijuma (kao Gmail), i to omogućava lakšu filtraciju mailova po pošiljocu, subjectu itd. Definisanjem akcije možete smeštati poruke u foldere ili ih tagovati.

Add Filter

Filter Name: Active

If all of the following conditions are met:

From	contains	sibin.grasic@mensa.rs	all	<input type="button" value="+"/>	<input type="button" value="-"/>
Subject	matches exactly	Test izvod		<input type="button" value="+"/>	<input type="button" value="-"/>

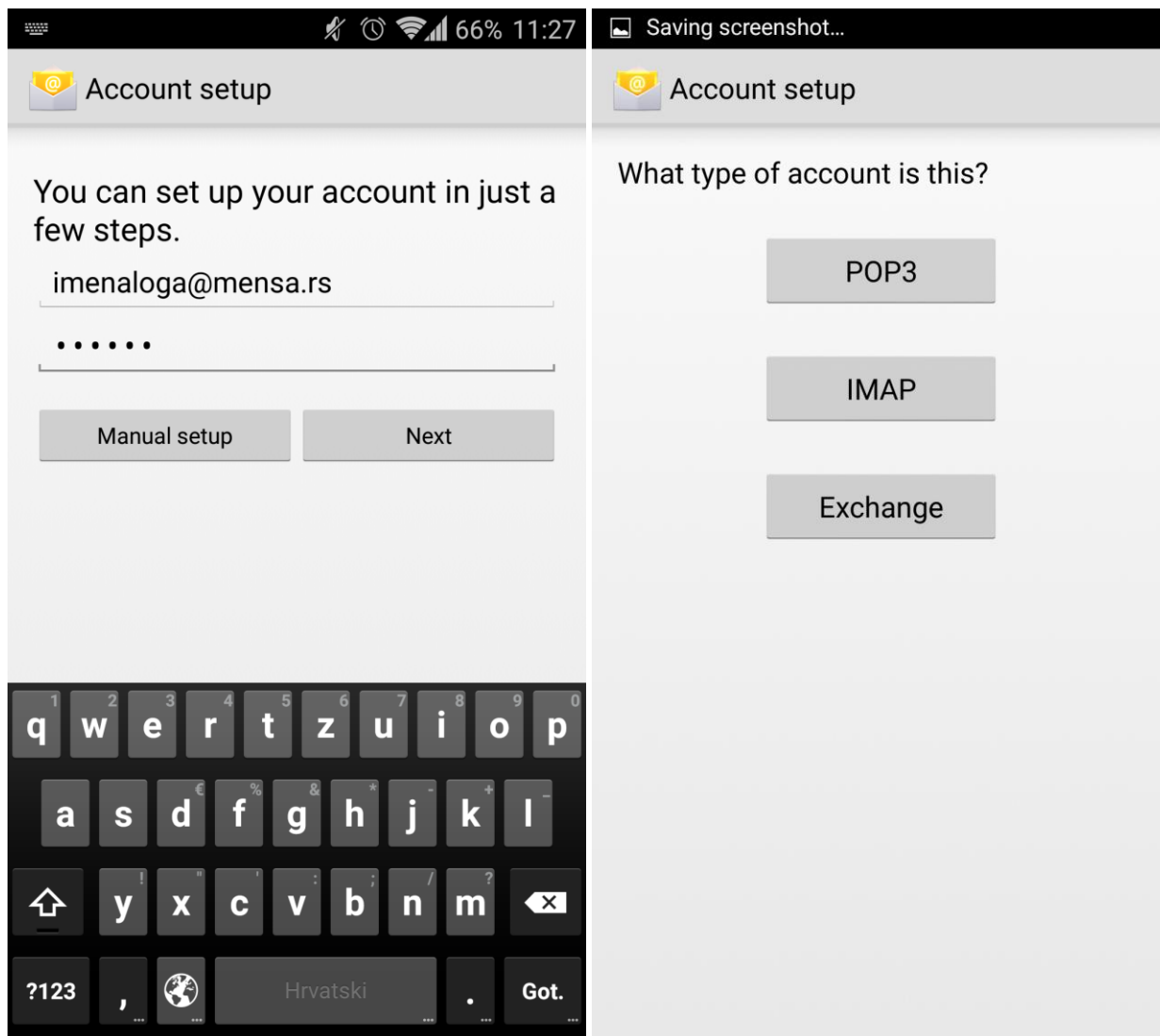
Perform the following actions:

<input type="button" value="Keep in Inbox"/>	<input type="button" value="+"/>	<input type="button" value="-"/>
--	----------------------------------	----------------------------------

filters

4. Mobilni pristup

U nastavku možete videti slikovito objašnjenje konfiguracije mobilnog e-mail klijenta (na android uređajima)



Account setup

Account setup

Username
imenaloga@mensa.rs

Password
•••••

Server
mail.mensa.rs

Port
993

Security type
SSL/TLS

IMAP path prefix
Optional

SMTP server
mail.mensa.rs

Port
465

Security type
SSL/TLS

Require signin

Username
imenaloga@mensa.rs

Password
•••••

Previous Next

Previous Next